

Annex A



• THE PRESENTED IMAGE IS ILLUSTRATIVE, MAY VARY THE FINAL PRODUCT AND CHANGE WITHOUT NOTICE.
RAILING AND DIVISORY TERRACE WALLS MATERIALS MAY VARY IN ACCORDANCE TO THE NEEDS OF FACADES PROJECT

Mezzanine 11 Tower 3

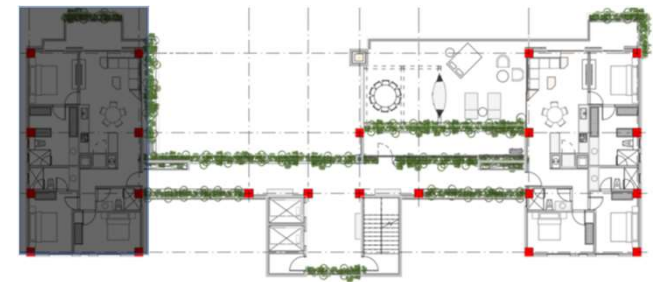
- Bedrooms: 3
- Bathrooms 3
- Living / Dining Room
- Kitchen
- Terrace

- Interior Area: 113.84 m2 / 1,225.36 sqft
- Terrace: 11.92 m2 / 128.25 sq ft
- Total Area: 125.76 m2 / 1,353.61 sq ft



Location

- Tower 3
- Mezzanine 11



UNIT 3-1101

PUNTA LAGUNA
LUXURY APARTMENTS
CORASOL, RIVIERA MAYA



CORASOL